

<b>Output power:</b>	<b>max. 200 Watt</b>	<b>Typical applications:</b>	Laboratory plating lines
<b>DC current:</b>	<b>max. 12 A (at 15 V)</b>	Precious metal plating	Reel-to-reel plating
<b>DC voltage:</b>	<b>max. 30 V (at 2 A)</b>	PCB lines	Manual plating lines

DC power supply linear controlled, designed for use in electroplating.



POWER STATION pe1018-2, front view



POWER STATION pe1018-2, back view

### Characteristic values

Linearity inaccuracy < 0.3 %

Ripple less than < 0.2 %

Constant current and voltage control

Soft start function

Over temperature protection

Current and voltage preset

Programmable control unit

Large 3-line LCD display

Keypad for operation and programming

Integrated Ampere-hour counter (totalizer)

(preset counter and other functions optional available)

Mains supply: standard 230 V +/- 10 % / 50-60 Hz

(other voltages on request)

### Cooling

Optimized cooling air guiding, air consumption max. 50m<sup>3</sup>/h

Cooling air outlet at the device back panel

Ambient temperature 40°C (other on request)

### Design

Compact desktop unit, protection grade IP21

Casing powder coated colour RAL 9018 (Standard)

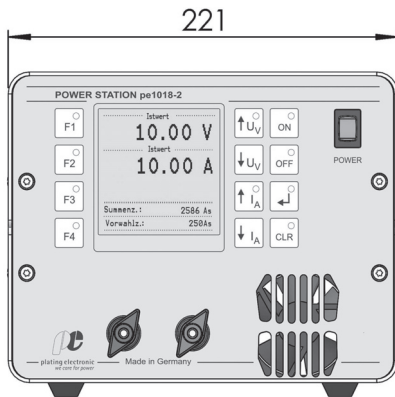
Aluminium front panel with polycarbonat film

DC connection in front or back panel (lead through bolts or oval flat clamp)

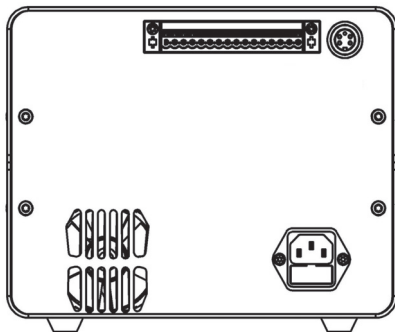
Easy installation

Values	Standard sizes – DC output <sup>1</sup>								other sizes on request		
	12 A								10 A	8 A	2 A
DC current	12 A								10 A	8 A	2 A
DC voltage	4 V	5 V	6 V	8 V	10 V	12 V	15 V	20 V	24 V	30 V	
Mains supply	230 V AC										
Weight	approx. 8 kg										

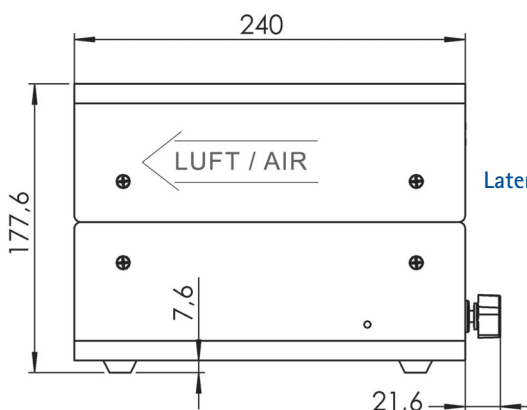
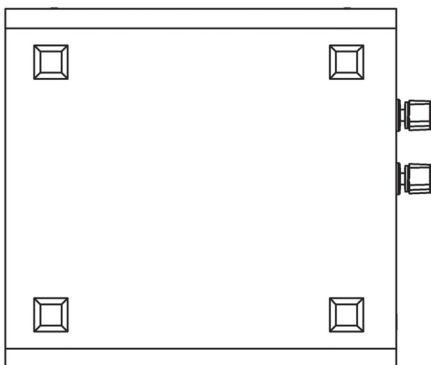
### Dimensions in mm



Frontside view



Backside view



Lateral view

### Control optional available

Analog signals galvanically isolated via isolation amplifier:  
0-10V, 4-20mA, 0-20mA (other on request), X4-terminal

Serial interface RS485: X6 and X7 terminal

### Optional available functions

Preset counter, dosage counter \*

Ramp function (start / stop ramp)

Timer function for ON / OFF \*

Voltage / current alarm \*

Operating hours counter

Chopper timer

Pole changer function (mechanical / electronic) \*

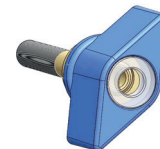
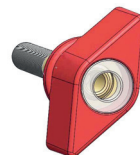
Programmable DC steps (14 individual steps) \*

Extern ON / External enabling

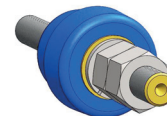
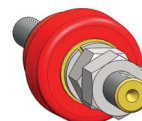
\* Indication / alarm output

### DC connector

can be installed in front or back panel



DC oval flat clamp



DC lead through bolts

Technical equipment, design and features: subject to change! For further information please contact plating electronic GmbH.

plating electronic GmbH | 79350 Sexau | Fon +49 7641 93500-0 | www.plating.de  
Rheinstr. 4 | Germany | Fax +49 7641 93500-999 | info@plating.de